



ITI CAPITAL

RATES & CHARGES

Effective from 10th Sept 2019

www.iticapital.com

Equities | Futures | Options | FX | CFDs | ETFs | Managed Funds | Fixed Income

Rate Schedule

Online							
Asset Class	Instrument	Currency	Rate	Minimum	Ticket Charge Per Trade		Note
ETF's / EQUITIES	London Stock Exchange - LSE	GBP	10bps (0.1%)	£12.50	£0		*
	London Stock Exchange - LSE	EUR	25bps (0.25%)	€ 20	€0		*
	Xetra / Deutsche Borse	EUR	25bps (0.25%)	€ 20	€0		*
	US Equities	USD	2c per share	\$15	\$0		
	Pink Sheets / OTC	USD	100bps (1%)	\$15	\$100		
	Toronto Stock Exchange	CAD	2c per share	C\$20	C\$0		
	Australian Securities Exchange	AUD	50bps (0.5%)	A\$30	A\$25		
	UK UNIT TRUSTS		GBP	30bps (0.3%)	£15	£0	
	EQUITY OPTIONS	ICE UK Equity Options	GBP	£5 per contract		£5	
US Equity Options		USD	\$5 per contract		\$5		*
European Equity Options		EUR	€5 per contract		€5		*

* Other exchanges and products available on request

EXERCISE / ASSIGNMENT : charged at standard equity dealing rate as above, Min GBP12.5/EUR20/USD15

Rate Schedule (cont)

		Online					
Asset Class	Instrument	Currency	Rate	Minimum	Ticket Charge Per Trade		Note
FUTURES & NON EQUITY OPTIONS	UK Futures & Options	GBP	£5 per contract		£5		
	US Futures & Options	USD	\$5 per contract		\$5		
	European Futures & Options	EUR	€5 per contract		€5		
	Australian Securities Exchange	AUD	A\$10 per contract		A\$10		
	Hong Kong Futures Exchange	HKD	HK\$100 per contract		HK\$50		
	Tokyo / Osaka Exchange	JPY	¥1000 per contract		¥1000		
	Singapore Exchange	JPY	¥1000 per contract		¥1000		
	Other exchanges / contracts available on request.						
Includes Exchange fees as of 01/10/2018. Exchange fees may change without notice.							
SHARE CFD	UK	GBP	10bps (0.1%)	£15			**
	US	USD	2c per share	\$20			**
	Europe	EUR	15bps (0.15%)	€20			**
	Switzerland	CHF	20bps (0.2%)	SFr20			**
	Sweden	SEK	20bps (0.2%)	SEK150			**
	Other exchanges / contracts available on request.						
** Share CFD Financing Rate : +2.5% / -2.5% above or below relevant benchmark rate eg LIBOR.							
BONDS	UK Corporate	GBP	50bps (0.5%)	£15	£25		
	US Treasury	USD	50bps (0.5%)	\$20	\$20		
	US Corporate	USD	50bps (0.5%)	\$25	\$20		
	EU Government	EUR	50bps (0.5%)	€20	€25		
	EU Corporate	EUR	50bps (0.5%)	€20	€25		
FX VIA MT4	FX Pairs + Metals	USD		0.01 Lot	Retail \$50 Per Mio Pro \$30 Per Mio		

			Rates & Charges
Fee Description	Charge Structure	Frequency	Amount
Interest charges / payments (cash balances)	Percentage on amount of debit	Daily - billed monthly	Debit interest at 2.5% above the relevant overnight reference rate (eg LIBOR)
Wire payment fee (withdrawals)	Flat fee	Per transaction	GBP - Domestic CHAPS payments - £10.00 USD - Domestic & International - \$40 GBP - Foreign payments - £10.00 GBP - BACS payments - Free EUR - SEPA payments - €5.00
Stop payment fee	Flat fee	Per transaction	£10.00 \$25.00 €35.00
Equity stock deposit fee	Flat fee	Per transaction	UK/IRE £20.00 Other international markets £100 or currency equivalent
Equity stock materialisation fee	Flat fee	Per instrument	Percentage of notional value USD 2.5% UK/IRE £50.00 \$1000 Other international markets £100 or currency equivalent
Certificated CREST rejection fee	Flat fee	Per transaction	£15.00
Equity share electronic transfer In	Flat fee	Per instrument	Free
Equity share electronic transfer Out	Flat fee	Per instrument	£25.00 per line of stock or currency equivalent
Funds transfer out	Flat fee	Per instrument	£25.00 per line of stock or currency equivalent
Bonds transfer out	Flat fee	Per instrument	£25.00 per line of stock or currency equivalent
Option exercise / assignment	Trade based commission	Per trade	Standard equity dealing rate noted in Commissions section above. Minimum applies.

			Rates & Charges
Fee Description	Charge Structure	Frequency	Amount
Custody Fee	Flat fee	Month end snapshot on asset value	25 bps per annum.
Collateral utilisation fee	Percentage on amount utilised	Monthly on collateral use	2.5% above the relevant overnight reference rate (eg LIBOR)
Debit balance fee	Percentage	Daily when account in debit	20% per annum
Funds custody fee	Percentage on notional value	Charged quarterly	35bps per annum
Portfolio valuation	Flat fee	Time of request	£25 per line of stock, minimum £100
ISA management fee	Percentage on account value	Charged quarterly	30bps per annum, minimum £7.5 per quarter
Duplicate document requests	Flat fee	Time of request	£5.00 per item
Special borrow charge	Period of short position	Daily	Charges vary by instrument and are available on request
Currency conversion rates	Percentage on amount	Per trade	0.09% on conversion rate subject to a minimum GBP5 (or currency equivalent)
UK / US C FD financing rates	Percentage on amount	Daily	2.5% above or below the relevant benchmark rate (eg LIBOR)

Government Charges

Fee Description	Charging Structure	Rates & Charges	
		Frequency	Amount
Stamp Duty (UK registered stock purchases only)	Percentage of notional value	Per transaction	0.5% of transaction value
Stamp Duty (Irish registered stock purchases only)	Percentage of notional value	Per transaction	1% of transaction value
Panel on Takeovers & Mergers (PTM) Levy - UK	Flat fee	Per transaction	£1.00 on all trades over £10,000 notional value
Panel on Takeovers & Mergers (PTM) Levy - IRE	Flat fee	Per transaction	€1.25 on all trades over €12,500 notional value

These are Government levies and subject to change without notice.

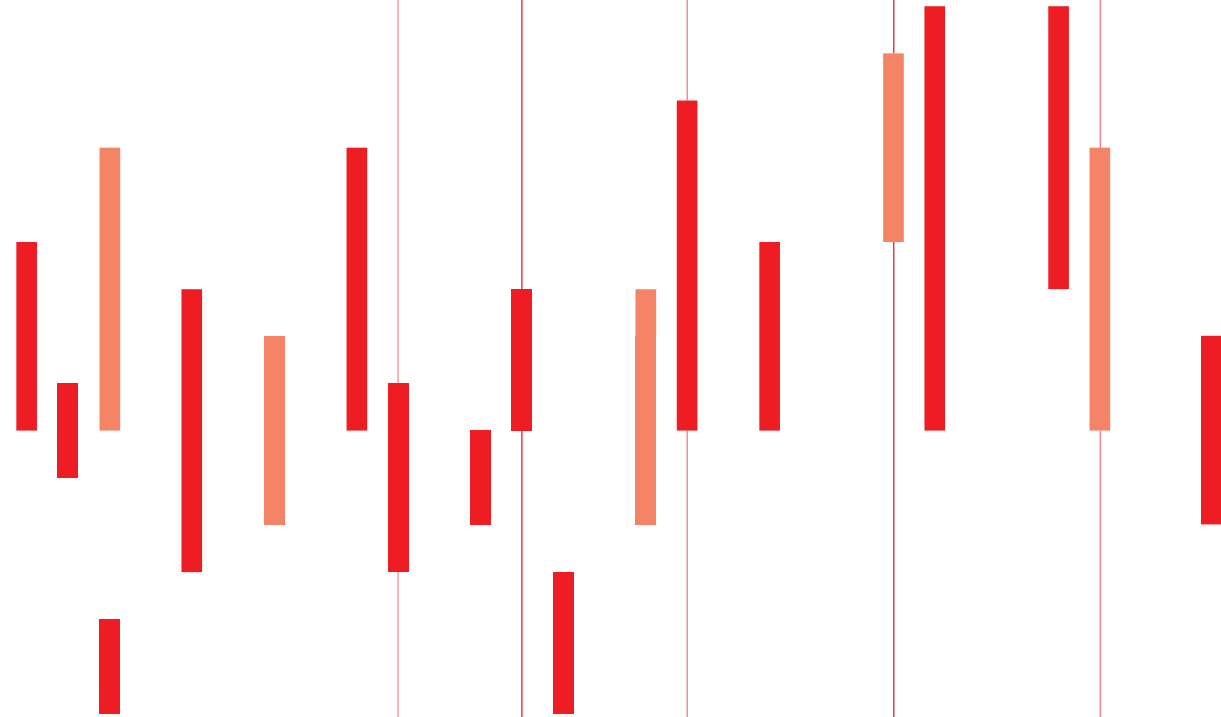
Data Subscription Fees

Asset Class	Exchange	Delayed Data	Rates & Charges	
			Level 1 Data	Level 2 Data
UK Equities	LSE	Free (15 mins delay)	***	***
UK Equity Options	ICE Europe/LIFFE	Free (15 mins delay)	***	***
European	Euronext Paris	Free (15 mins delay)	***	***
US Equities	NYSE	Free (15 mins delay)	***	***
	NASDAQ	Free (15 mins delay)	***	***
	AMEX	Free (15 mins delay)	***	***
US Equity Options	OPRA	n/a	***	***

*** All prices set by the relevant Exchange and subject to change without notice. Data fees are subject to an additional 5% administration charge. Prices depend on exchange and client profile. Please contact your account manager for further details

Trading Platform Fees

We can provide our in-house proprietary web platform free of charge.



ITI CAPITAL

ITI Capital Limited

Level 33 Tower 42,
25 Old Broad Street,
London EC2N 1HQ,
United Kingdom

Phone	+44 (0) 20 3889 8333
Fax	+44 (0) 20 3889 8331
Email	customerservice@iticapital.com
Web	iticapital.com

ITI Capital Limited is a registered company in England and Wales (Registration No. 02926252), authorised and regulated in the United Kingdom by the Financial Conduct Authority (Registration No. 171487) and is a member of the London Stock Exchange and of ICE Europe. The registered address of ITI Capital Limited is Level 33 Tower 42, 25 Old Broad Street, London EC2N 1HQ, United Kingdom.